



Active L1/L2 GPS Choke Ring Antennas, P/N: 123GM1215A-XT-1-F :
12" Diameter x 4.2" High, Pipe Mount Configuration



ANTCOM CORPORATION . 367 Van Ness Way, #602 . Torrance, CA 90501 . Tel: (310) 782-1076 . Fax: (310) 782-1086 . E-mail: antennas@antcom.com . <http://www.antcom.com>

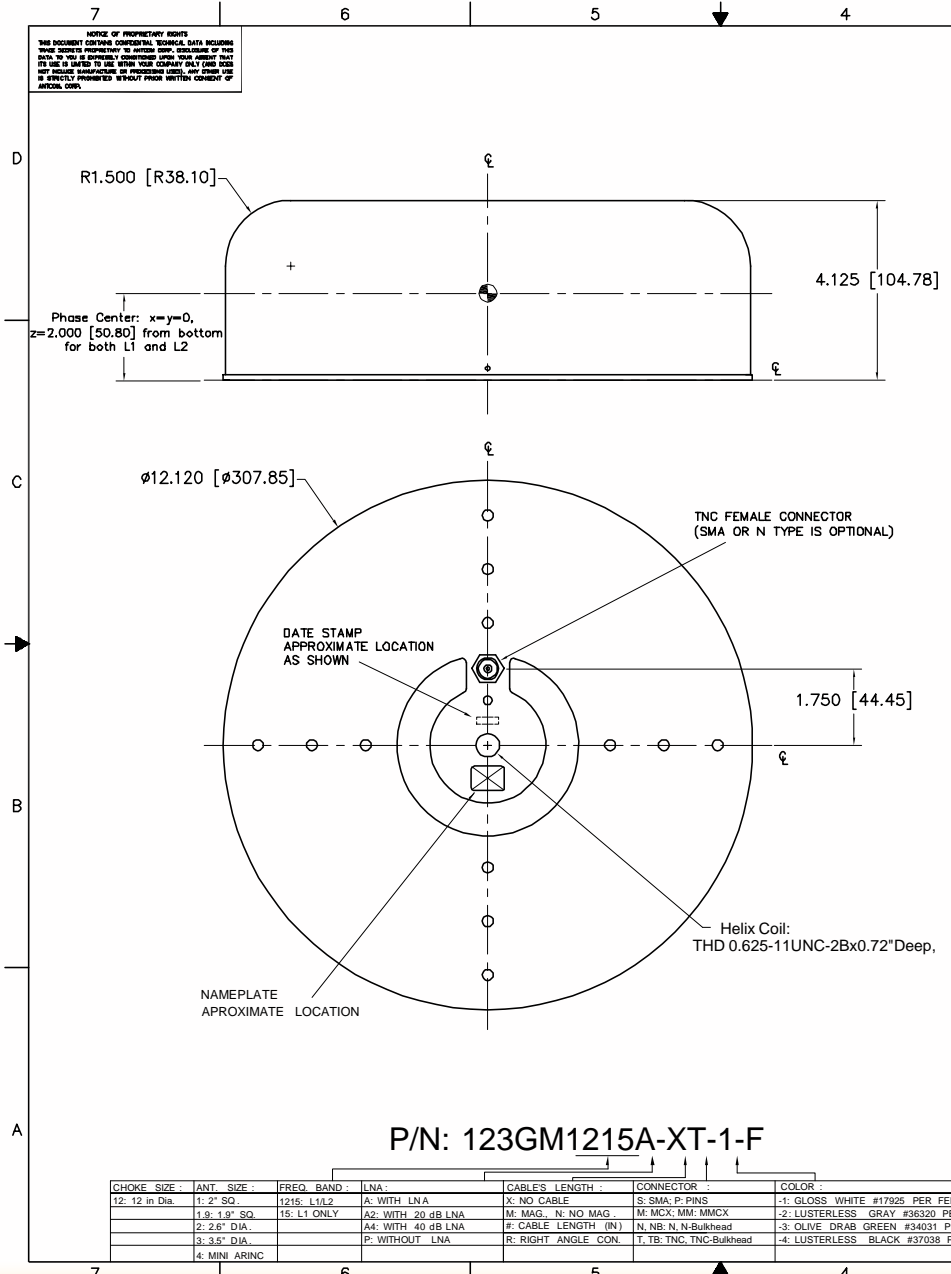




Active L1/L2 GPS Choke Ring Antennas, P/N: 123GM1215A-XT-1-F : 12" Diameter x 4.2" High, Pipe Mount Configuration



ANTCOM CORPORATION . 367 Van Ness Way, #602 . Torrance, CA 90501 . Tel: (310) 782-1076 . Fax: (310) 782-1086 . E-mail: antennas@antcom.com . http://www.antcom.com



SPECIFICATIONS		REVISIONS		
ZONE	REV	DESCRIPTION	DATE	APPROVED

ELECTRICAL:

FREQUENCY:	L1: (1575.42 ±15) MHz	L2: (1227.60 ±15) MHz		
RADIATION PATTERN:	HEMISPHERICAL			
POLARIZATION:	RHCP	RHCP		
VSWR:	< 1.5:1	< 1.5:1		
IMPEDANCE:	50 ohms	50 ohms		
GAIN (dBic) & AR (dB)	GAIN	AR	GAIN	AR
@ 90° (Zenith):	+7.7	0.2	+4.7	1.0
@ 10° Elevation:	-5.3	3.0	-9.9	1.0
@ 20° Elevation:	-2.7	3.0	-6.5	7.0
@ 30° Elevation:	-0.4	3.0	-3.6	5.0
@ 45° Elevation:	+2.9	2.0	0.0	4.0
@ 70° Elevation:	+6.8	1.0	+3.5	1.5
BEAM WIDTH (3dB)	67.4 Deg.		63.5 Deg.	
LIGHTNING PROTECTION:	DC GROUNDING			
LNA GAIN:	20 dB (...A2-...), 33 dB (...A-...), 40 dB (...A4-...)			
LNA NOISE FIGURE:	1.9 dB			
LNA P1dB Out:	+13 dBm			
LNA DC POWER:	(2.5-24) V / < 35 mA			

MECHANICAL:

SIZE: DIAMETER: 12.120 in. [307.85 mm]
HEIGHT: 4.125 in. [104.78 mm]

WEIGHT: 4.5 lbs. (2.04 Kg)

FINISH: SKYDROL RESISTANT POLYURETHANE ENAMEL
BASE IRIDITE PER MIL-C-5441

MATERIAL: 6061-T6 ALUMINUM ALLOY BASE
COMPOSITE RADOME, IMPACT, ABRASION, UV,
SOLVENT, SKYDROL RESISTANCE

CONNECTOR: TNC FEMALE
(SMA, OR N TYPE IS OPTIONAL)

ENVIRONMENTAL:

TEMPERATURE: -67 °F TO +185 °F [-55 °C TO +85 °C]
ALTITUDE: 70,000 ft.
VIBRATION: > 30 G's
LEAKAGE: HERMETICALLY SEAL

FEDERAL & MILITARY SPECIFICATIONS:

DESIGN TO: FAA TSO-C144, DO-160D, D0-228, MIL-C-5541,
MIL-E-5400, MIL-I-45208A, MIL-STD-810, AND SAE J1455

QUANTITY REQD	DESCRIPTION	PARTS LIST	PART NO	REV
4	MOUNTING SCREWS	MS24693C273		5
1	INTERNAL ANTENNA / CABLE	3G1215A-XS-1 / SMA-MR-RG316-3.2in-TNC-FB		4
1	CHOKE RING ADAPTER	12G1215P001-B4		3
1	CHOKE RING / PLUGS	12G1215P001-B3 / 8598SK12		2
1	RADOME	12G1215-R-5		1
-2				

P/N: 123GM1215A-XT-1-F

CHOKE SIZE	ANT. SIZE	FREQ. BAND	LNA	CABLES LENGTH	CONNECTOR	COLOR
12: 12 in Dia.	1: 2" SQ.	1215: L1/L2	A: WITH LNA	X: NO CABLE	S: SMA; P: PINS	-1: GLOSS WHITE #17925 PER FED-STD-595B
	1.8: 1.8" SQ.	15: L1 ONLY	A2: WITH 20 dB LNA	M: MAG; N: NO MAG	M: MCK; MM: MMCKX	-2: LUSTERLESS GRAY #36320 PER FED-STD-595B
	2: 2.5" DIA.		A4: WITH 40 dB LNA	F: CABLE LENGTH (IN)	N: NB; N: N-Bulkhead	-3: OLIVE DRAB GREEN #34931 PER FED-STD-595B
	3: 3.5" DIA.		P: WITHOUT LNA	R: RIGHT ANGLE CON.	T: TB; TNC; TNC-Bulkhead	-4: LUSTERLESS BLACK #37038 PER FED-STD-595B
	4: MINI ARINC					

UNLESS OTHERWISE SPECIFIED DIMENSIONS ARE IN INCHES

FRONTS UNLESS OTHERWISE SPECIFIED DIMENSIONS ARE IN INCHES

TOLERANCE SIZE PER ANSI Y14.5

REMOVE ALL BURRS

BRAC EXTERNAL EDGES AND TO JIS

FILED IN FILE 12 OF 100

DATE ON A COMBINATION OF JOB

MACHINED SURFACES

DO NOT SCALE DRAWING

ANTCOM CORP. TORRANCE CALIFORNIA

OUTLINE DRAWING
ACTIVE L1/L2 CHOKE RING
GPS ANTENNA

OWNER: S. HUYNH
02-08-13

APPROVED: S. HUYNH
02-08-13

SCALE 1/1

SHEET 1 OF 1