

L1 GPS /L-Band Antenna, P/N: 3GO15A4-XXR-1: 3.5" Dia. Front/Back/Pipe Mount Configuration

ANTCOM CORPORATION . 367 Van Ness Way, Suite 602 . Torrance, CA 90501 . Tel: (310) 782-1076 . Fax: (310) 782-1086 . E-mail: antennas@antcom.com . http://www.antcom.com



P/N: 3GO15A4-XXR-1
(White)



P/N: 3GO15A4-XXR-2
(Gray)



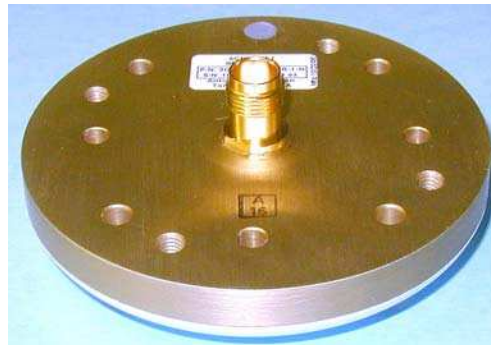
P/N: 3GO15A4-XXR-3
(Green)



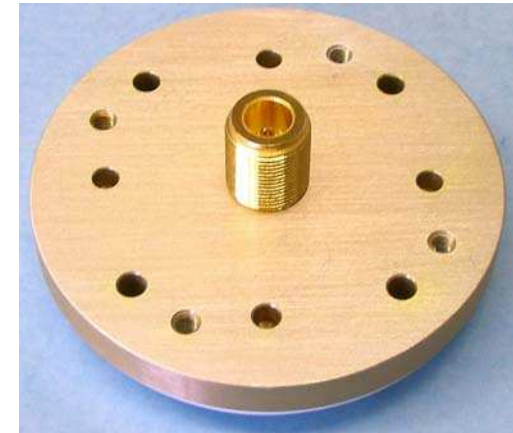
P/N: 3GO15A4-XXR-4
(Black)



P/N: 3GO15A4-XSR-X
(SMA)



P/N: 3GO15A4-XTR-X
(TNC)



P/N: 3GO15A4-XNR-X
(N)

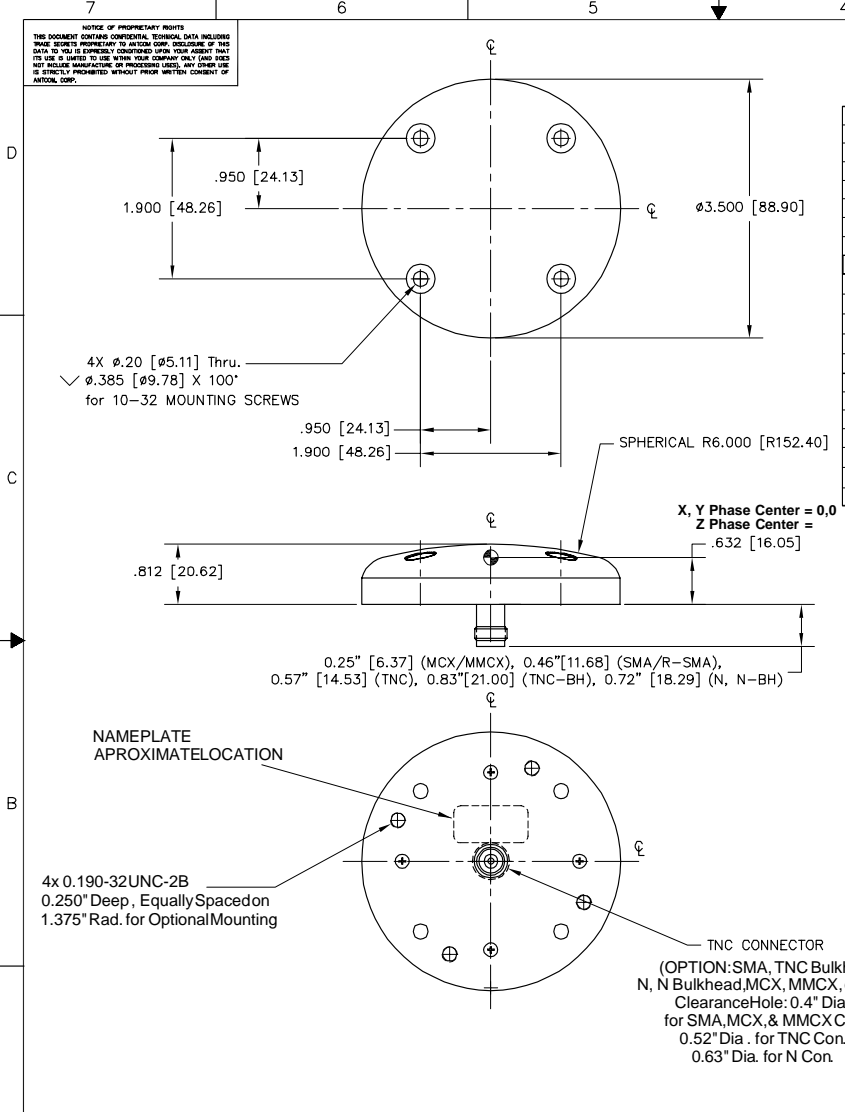
Hermetically Sealed, Designed for Harsh Environment Applications.

Connector is Available in SMA, MCX, MMCX, TNC, TNC-B, N, or N-Bulkhead (See Drawing)



L1 GPS / L-Band Antenna, P/N: 3GO15A4-XXR-1: 3.5" Dia. Front/Back/Pipe Mount Configuration

ANTCOM CORPORATION . 367 Van Ness Way, Suite 602 . Torrance, CA 90501 . Tel: (310) 782-1076 . Fax: (310) 782-1086 . E-mail: antennas@antcom.com . http://www.antcom.com



SPECIFICATIONS

ELECTRICAL:

FREQUENCY:	L1: (1575.42 ±13) MHz	O: (1542.5 ±17.5) MHz
RADIATION PATTERN:	HEMISPHERICAL	
POLARIZATION:	RHCP	
VSWR:	< 1.5:1	
IMPEDANCE:	50 ohms	
ANTENNA GAIN (dBic):	Free Space	4 ft G.P.
@ 90 °(ZENITH):	+ 4.1	+ 2.5
@ 10 °Elevation:	- 3.5	- 3.0
@ 20 °Elevation:	- 2.1	- 0.2
@ 30 °Elevation:	- 0.8	+ 0.8
@ 60 - 90 °Elevation:	> 2.5	> 1.8
BEAM WIDTH(3dB):	87 Deg.	139 Deg.
AXIAL RATIO:	2 dB	2 dB
LIGHTNING PROTECTION:	DC GROUNDING	
LNA GAIN:	20 dB (...A2-..), 40 dB (...A4-..)	
LNA NOISE FIGURE:	1.9 dB	
LNA P1dB Out:	+13 dBm	
LNA DC POWER:	(2.5-24) V / < 35 mA	
POWER HANDLING:	1 Watt CW	

MECHANICAL:

SIZE: DIAMETER: 3.50 in. [88.90 mm]
HEIGHT: 0.812 in. [20.62 mm]
8.0 oz. (226.8 g)

WEIGHT:

FINISH: SKYDROL RESISTANT POLYURETHANE ENAMEL
BASE IRIDIUM PER MIL-C-5441

MATERIAL: 6061-T6 ALUMINUM ALLOY BASE
COMPOSITE RADOME, IMPACT, ABRASION, UV, SOLVENT,
SKYDROL RESISTANCE AND FIRE RETARDANT

CONNECTOR: TNC FEMALE
(OPTION: SMA, TNC Bulkhead, N, N Bulkhead,
MCX, MMCX, or Cable)

ENVIRONMENTAL:

TEMPERATURE: -67 F TO +185 F [-55 C TO +85 C]
ALTITUDE: 70,000ft.
VIBRATION: > 30 G's
LEAKAGE: HERMETICALLY SEAL

FEDERAL & MILITARY SPECIFICATIONS

DESIGN TO: FAA TSO-C144, DO-160D, D0-228, MIL-C-5541,
MIL-E-5400, MIL-I-45208A, MIL-STD-810, AND SAE J1455

ACCEPTANCE TEST PROCEDURE

QUANTITY REQD	DESCRIPTION	PART NO	TEN NO
4	MOUNTING SCREWS: 10-32, 3/4"	J507C1032R12, or 93085A831	5
A/R	WASHER, CUSTOM C'SINK	3G15P1001-70	3
1	GASKET	3G15P1001-3G	1
-2	-1		

P/N: 3GO15A4-XXR-1

SIZE	FREQ BAND	LNA	CABLE LENGTH	CONNECTOR	COLOR
1: 2" SQ.	42: ARINC743	GO1216:L1/L2GPS/GNSS/L-Band	X: NO CABLE	S: SMA; P: PINS	-1: GLOSS WHITE #17925PER FED-STD-595B
1.9: 1.9" SQ.	5: 5" CIRCULAR	GO1215:L1/L2GPS/L-Band	M: MAG, N: NO MAG	M: MCX; MM: MMCX	-2: LUSTERLESS GRAY #36320PER FED-STD-595B
2: 2.6" DIA.		GO16:L1GPS/GNSS/L-Band	P: WITHOUT LNA	N: NB; N: N-Bulkhead	-3: OLIVE DRAB GREEN #34031PER FED-STD-595B
3: 3.5" DIA.		G1215:L1/L2	R: RIGHT ANGLE CON.	T, Tc: TNC, TNC-Bulkhead	-4: LUSTERLESS BLACK #37038PER FED-STD-595B
4: MINI ARINC		GO1116:L1/L2/L3/L5/L6GPS/GNSS/Galileo			

ANTCOM CORP. TORRANCE, CALIFORNIA

Active L1 GPS / L-Band ANTENNA

UNLESS OTHERWISE SPECIFIED DIMENSIONS ARE IN INCHES FRACTIONS DECIMALS ANGLES ± 1/64 ± .015 ± .1°

TOLERANCE SURF PER ANSI Y14.5

DRIVER: M. BOAS 01-05-29

APPROVED: S. HUYNH 01-05-29

DO NOT SCALE DRAWING

SCALE 1/1

SHEET 1 OF 1